

- In addition to routine checks for each use, PPE should regularly undergo a detailed inspection by a competent person. Petzl recommends an inspection every 12 months and after any exceptional event in the life of the product.
 - PPE inspection should be conducted with the manufacturer's Instructions for Use.
- Download the instructions at [PETZL.COM](https://www.petzl.com).



JAG SYSTEM

1. Known product history

Any PPE showing unexpected degradation should be quarantined, pending a detailed inspection.

The user should:

- Provide precise information on the usage conditions.
- Report any exceptional event regarding his PPE.

(Examples: fall or fall arrest, use or storage at extreme temperatures, modification outside manufacturer's facilities...).

2. Preliminary observations

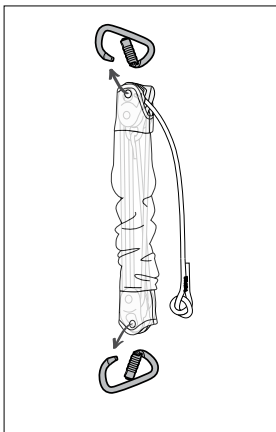
Verify the presence and legibility of the serial number and the CE mark.

Verify that the product lifetime has not been exceeded.

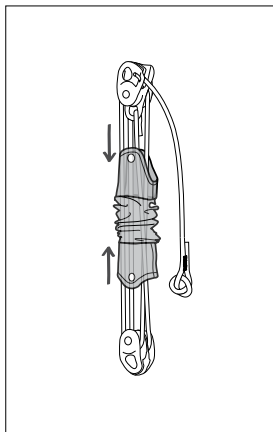
Compare with a new device to verify there are no modifications or missing parts.

3. Removing the connectors and the cover

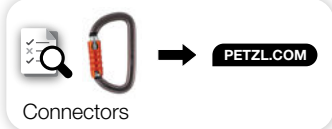
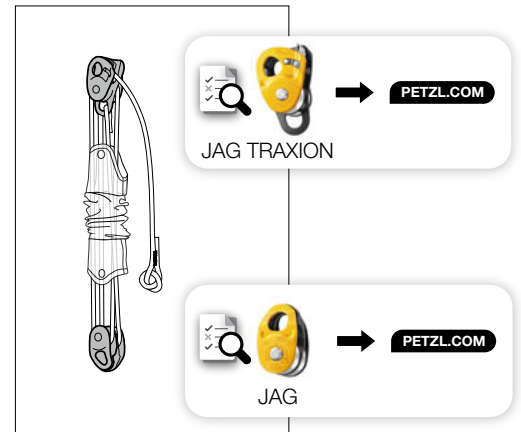
- Remove the connectors and inspect them using the corresponding inspection procedure.



- Collapse the cover.

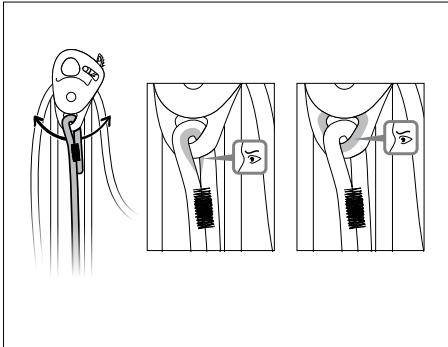


- Inspect JAG and JAG TRAXION using the corresponding inspection procedures.

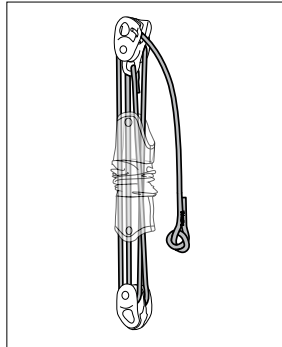


4. Inspecting the rope

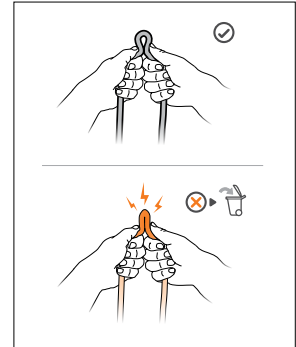
- Check the condition of the sewn loop on the JAG TRAXION. Move this loop to inspect the hidden parts of the JAG TRAXION attachment hole.



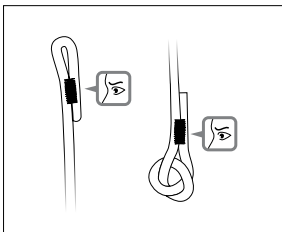
- Check the condition of the sheath over the full length of the rope (cuts, wear, burns, fuzzy areas or signs of chemical products...).



- Do a tactile inspection of the core along the full length of the rope (hard spots, swelling, soft or crushed areas...).

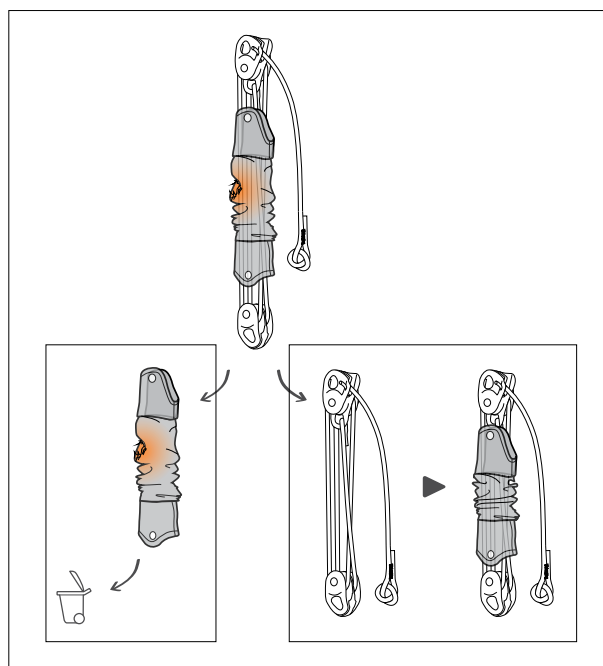


- Check the stitching. Make sure there are no cut, torn, loose, or worn threads.



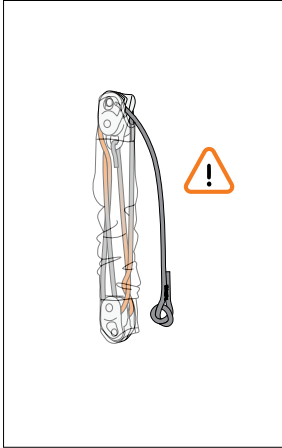
5. Inspecting the cover

- If necessary, remove the cover and replace it with a JAG SYSTEM replacement cover.

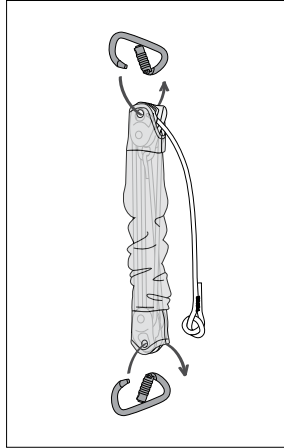


6. Installing the connectors

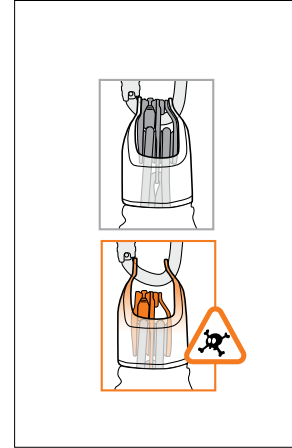
- Check that the rope is not tangled before reassembling the system.



- Reinstall the connectors.



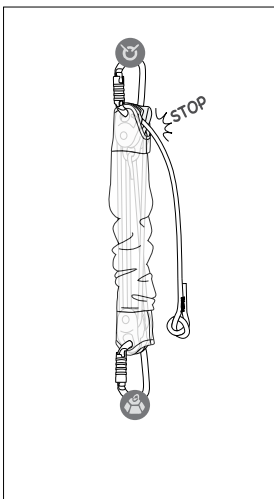
- Verify that the connectors are correctly positioned in the JAG and JAG TRAXION attachment holes.



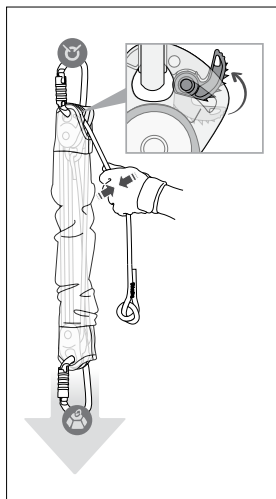
7. Function check

Install your JAG SYSTEM on an anchor at low height, with a light load.

- Verify that the system locks under load.



- Verify that the JAG TRAXION can be deactivated for a short descent.



- Verify that the load can be hauled.

